

VMware Cloning ;)

1

Templates

- Ubuntu
 - 1** Ubuntu 14.04 64-bit Template
 - Ubuntu 12.04.3-64bit
- Debian
 - Debian 7
 - Debian 6
- CentOS
 - CentOS 6
- OpenSuse
- Wordpress Hosting H...
- Wordpress Hosting H...
- Operation Clients
 - Win7-Station
 - Simulator-Station
 - My-Old-WinXP
- Templates
 - Ubuntu-12.04.3-64bi
 - Ubuntu-12.04.3-64bi
 - ISPConfig Hosting S...
 - LinuxMint 17 64-bit
 - PVE-Ceph
- Shared VMs

Close Tab

Mark as Favorite

Rename...

Remove

Power

Removable Devices

Pause

Send Ctrl+Alt+Del

Grab Input

2 Snapshot

- 3** Take Snapshot...
- Revert to Snapshot
- Snapshot Manager

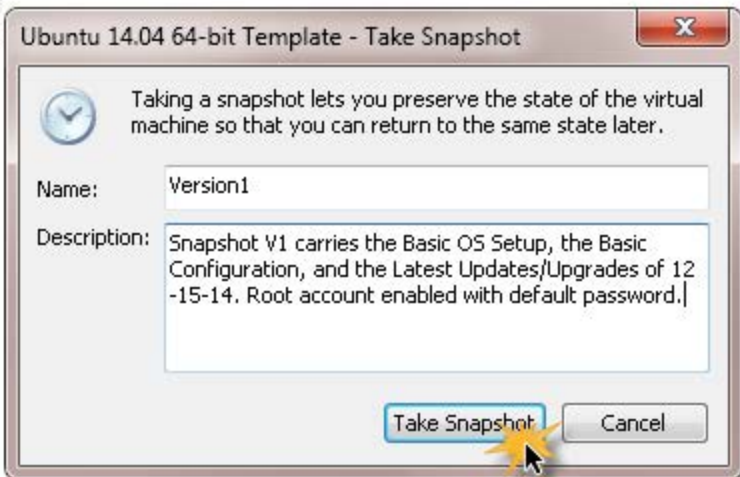
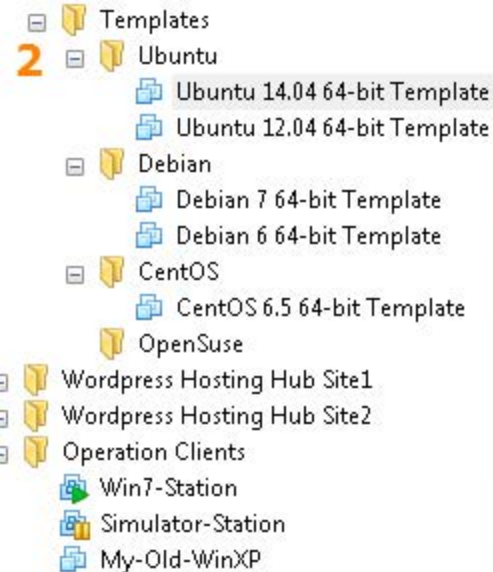
Capture Screen

Manage

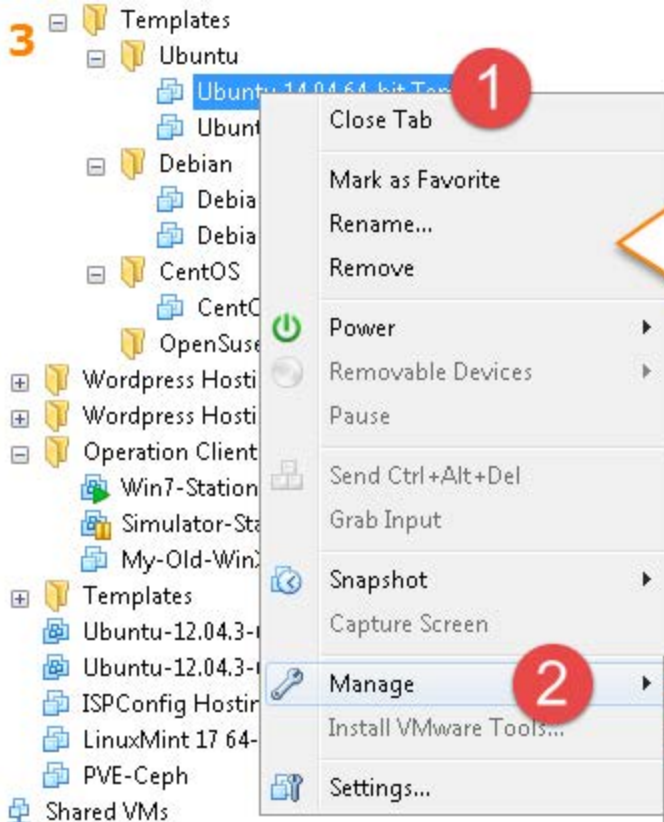
Install VMware Tools...

Settings...

Click the Template you prepared. Right Click to pop up the menu. Select Snapshot, then Hit Take Snapshot.



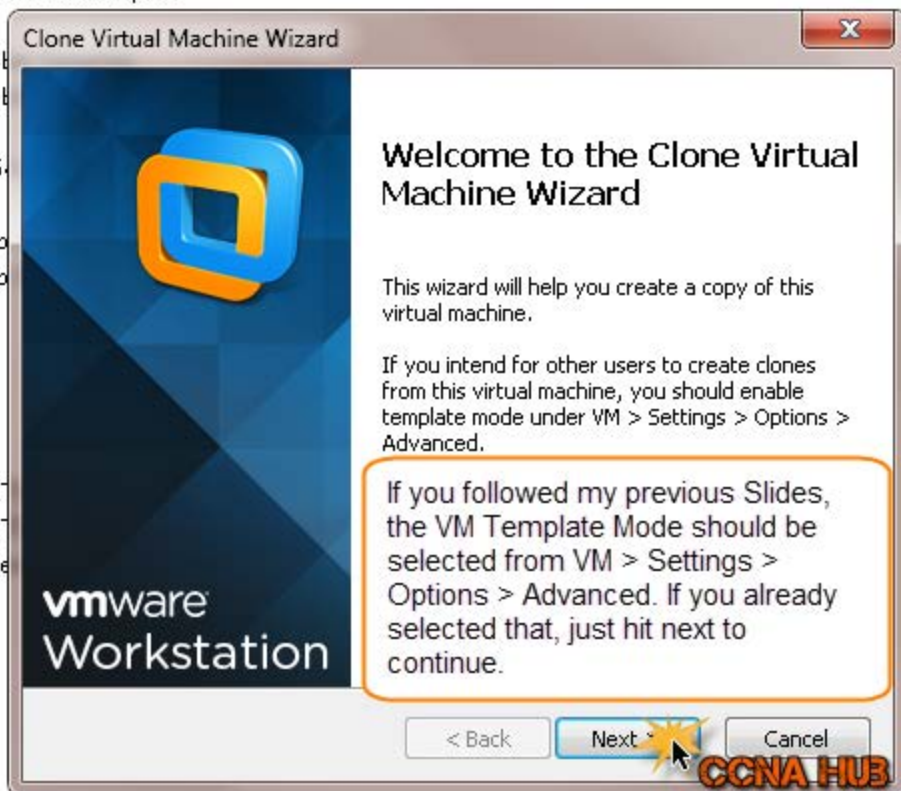
As you can see, I have Line of Templates to create testing environment using my favorite Linux distribution. They all loaded and installed the way I liked ready to deploy in a matter of seconds!



So once the Snapshot Version1 is taken, select the VM again. Right click to pup up the menu, hit manage, then choose Clone.



- 4 Templates
 - Ubuntu
 - Ubuntu 14.04 64-bit Template
 - Ubuntu 12.04 64-bit Template
 - Debian
 - Debian 7 64-bit Template
 - Debian 6 64-bit Template
 - CentOS
 - CentOS 6.5 64-bit Template
 - OpenSuse
- Wordpress Hosting Hub
- Wordpress Hosting Hub
- Operation Clients
 - Win7-Station
 - Simulator-Station
 - My-Old-WinXP
- Templates
 - Ubuntu-12.04.3-64bit-Linux
 - Ubuntu-12.04.3-64bit-Linux
 - ISPCConfig Hosting Server
 - LinuxMint 17 64-bit
 - PVE-Ceph
- Shared VMs



5

- Templates
 - Ubuntu
 - Ubuntu 14.04 64-bit Template
 - Ubuntu 12.04 64-bit Template
 - Debian
 - Debian 7 64-bit
 - Debian 6 64-bit
 - CentOS
 - CentOS 6.5 64-bit
 - OpenSuse
- Wordpress Hosting Hub
- Wordpress Hosting Hub
- Operation Clients
 - Win7-Station
 - Simulator-Station
 - My-Old-WinXP
- Templates
 - Ubuntu-12.04.3-64bit-L
 - Ubuntu-12.04.3-64bit-L
 - ISPConfig Hosting Serve
 - LinuxMint 17 64-bit
 - PVE-Ceph
- Shared VMs

Clone Virtual Machine Wizard

Clone Source
Which state do you want to create a clone from?

Clone from

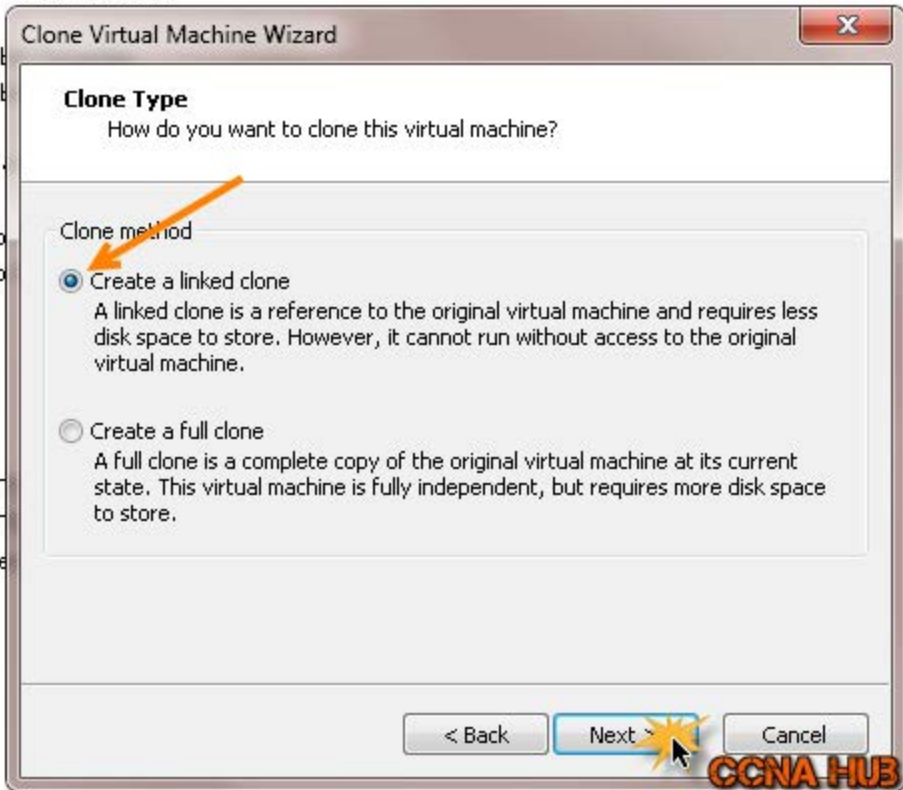
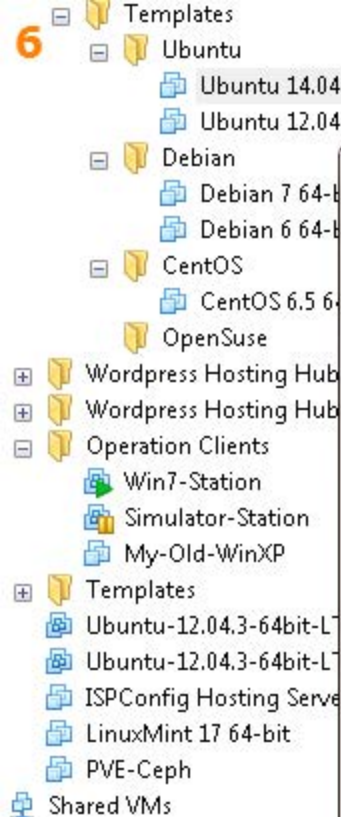
- The current state in the virtual machine
- This virtual machine is a template. It can be cloned only from an existing snapshot.
- An existing snapshot (powered off only):

Version1

Snapshot V1 carries the Basic OS Setup, the Basic Configuration, and the Latest Updates/Upgrades of 12-15-14. Root account enabled with default password.

< Back Next > Cancel





- 7 Templates
 - Ubuntu
 - Ubuntu 14.04 64-bit Template
 - Ubuntu 12.04 64-bit Template
 - Debian
 - Debian 7 64-bit Template
 - Debian 6 64-bit Template
 - CentOS
 - CentOS 6.5 64-bit Template
 - OpenSuse
- Wordpress Hosting Hub
- Wordpress Hosting Hub
- Operation Clients
 - Win7-Station
 - Simulator-Station
 - My-Old-WinXP
- Templates
 - Ubuntu-12.04.3-64bit-Linux
 - Ubuntu-12.04.3-64bit-Linux
 - ISPConfig Hosting Server
 - LinuxMint 17 64-bit
 - PVE-Ceph
- Shared VMs

Clone Virtual Machine Wizard

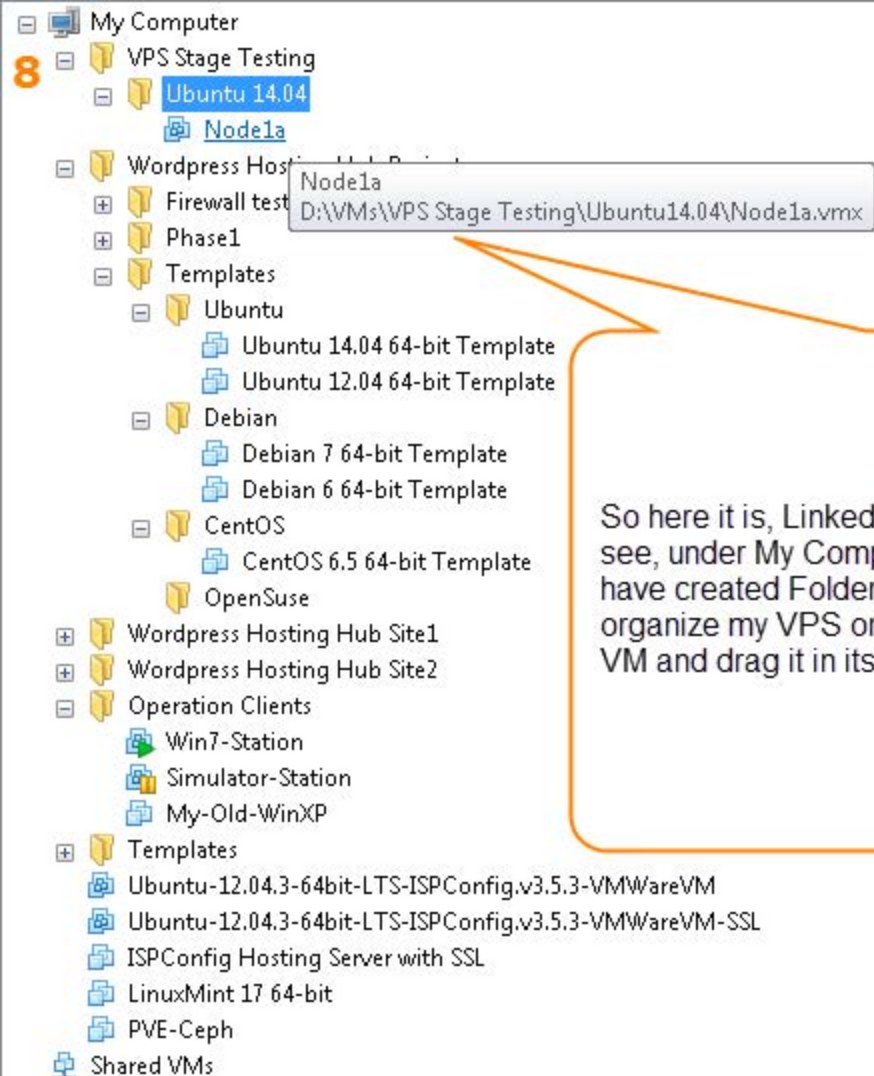
Name of the New Virtual Machine
What name would you like to use for this virtual machine?

Virtual machine name

Location

That's the last step before creating the Linked Clone machine, as you can see, I have named the VM "Node1a" I am referring to Node1 at Site A, and placed it in Stage Testing Location for Ubuntu 14.04. I always try to keep my VMs organized in their specific folders.

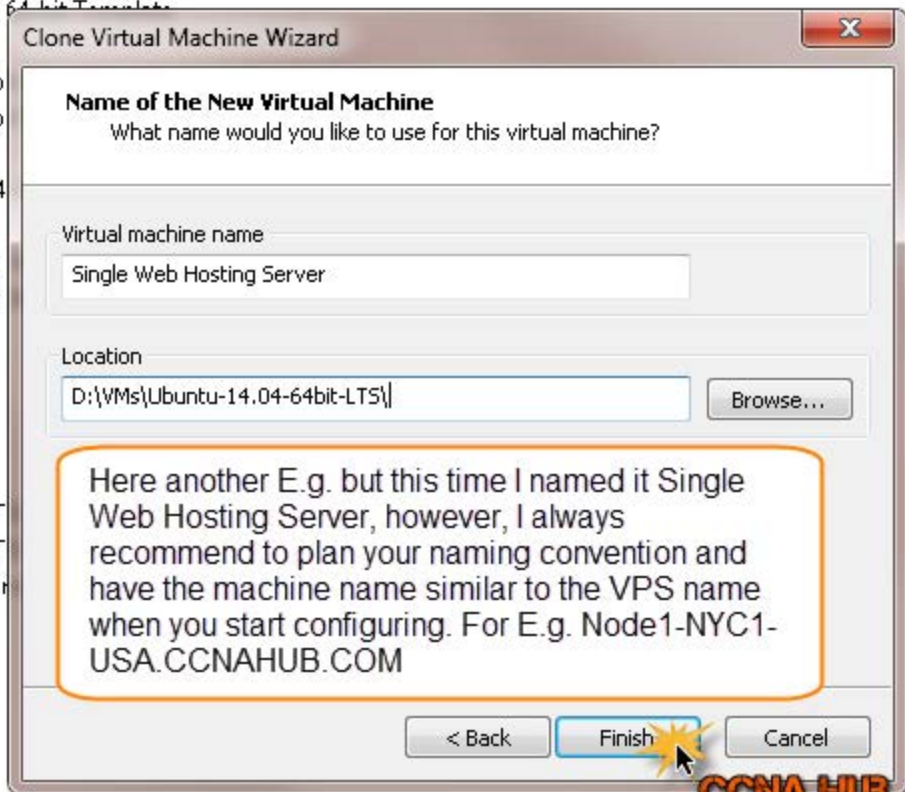
< Back **Finish** Cancel

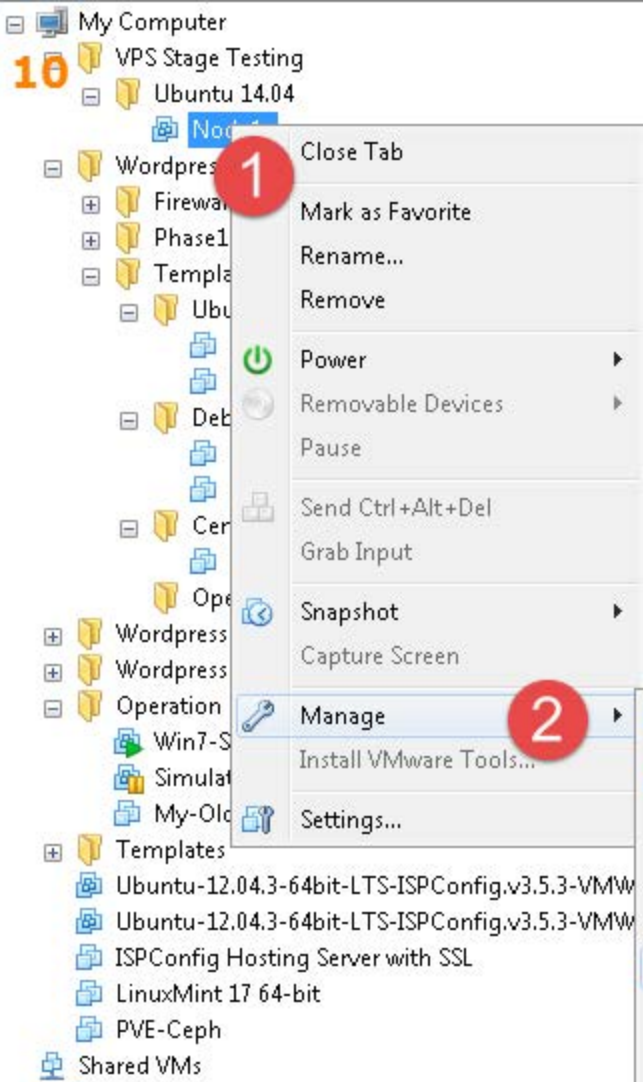


So here it is, Linked Clone VM. As you can see, under My Computer all the way up, I have created Folders inside Folders to organize my VPS or VMs, and just hold the VM and drag it in its folder.

9

- Templates
 - Ubuntu
 - Ubuntu 14.04 64-bit Template
 - Ubuntu 12.04 64-bit Template
 - Debian
 - Debian 7 64-b
 - Debian 6 64-b
 - CentOS
 - CentOS 6.5 64
 - OpenSuse
- Wordpress Hosting Hub
- Wordpress Hosting Hub
- Operation Clients
 - Win7-Station
 - Simulator-Station
 - My-Old-WinXP
- Templates
 - Ubuntu-12.04.3-64bit-LT
 - Ubuntu-12.04.3-64bit-LT
 - ISPConfig Hosting Server
 - LinuxMint 17 64-bit
 - PVE-Ceph
- Shared VMs





In case you want to delete the Linked Clone VM. Select the Machine, then right click to pop up the menu. Hit on Manage, then hit on Delete from Disk.

